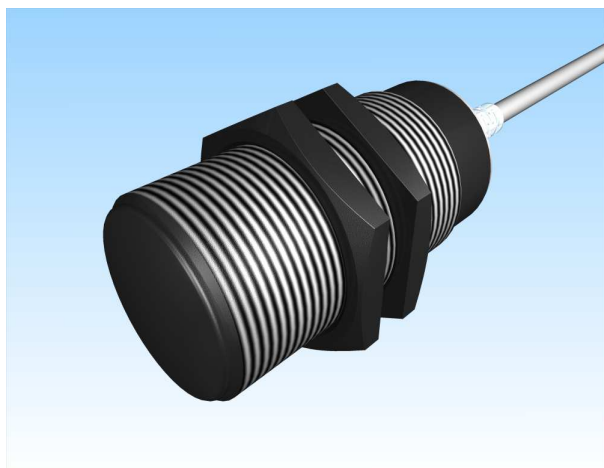
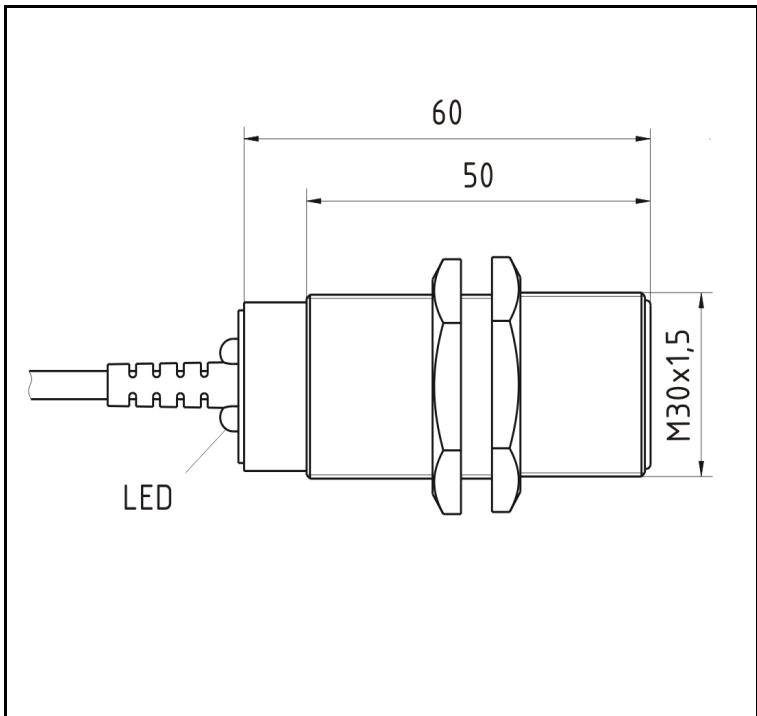


### KJ10-M30KB60-DNS



## INDUCTIVE SENSORS



<b>Rated Operating Distance</b>	<b>S<sub>n</sub></b>
<b>Mounting</b>	
<b>Output</b>	
<b>Order Number</b>	

Operating Voltage	U <sub>b</sub>
max. Ripple of Operating Voltage	
Voltage Drop	
max. Load Current	I <sub>e</sub>
No Load Current	I <sub>0</sub>
Leakage Current	I <sub>r</sub>
max. Switching Frequency	f
Time Delay before Availability	
Short Circuit / Reverse Polarity Protection	
Hysteresis	H
EMC - Level Shock / Vibration	
Assured Operating Distance	S <sub>a</sub>
Temperature Drift	
Repeat Accuracy	R
Protection Degree	
Indication of the Switching State	
Ambient Temperature	T <sub>a</sub>
Design	
Housing Material	
Material of Active Area	
Kind of Termination	
Utilization Category	
MTTF / FIT	(acc. Siemens-Standard 29500)

<b>10,0 mm</b>
<b>shielded</b>
<b>3-wire NPN normally open</b>
<b>08317663200 (old: 9966-3200)</b>
10 - 30 VDC
≤ 10 %
≤ 2,4 V
400 mA
≤ 13 mA
≤ 10 µA
500 Hz
50 ms
yes / yes
≤ 15 %
acc. to DIN EN60947-5-2: 2008
0 ... 8,1 mm
≤ 10 %
≤ 5 %
IP 67 acc. to DIN EN 60529
LED
- 25°C ... + 70°C
M30x1,5x60x10E
Trogamid T5002 black
-
2m cable PVC LIYY 3x0.34mm <sup>2</sup>
DC 13

Wiring Diagram:

