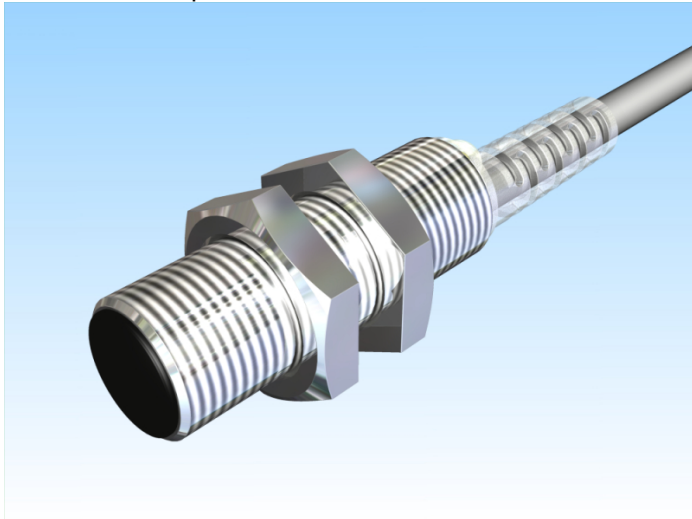
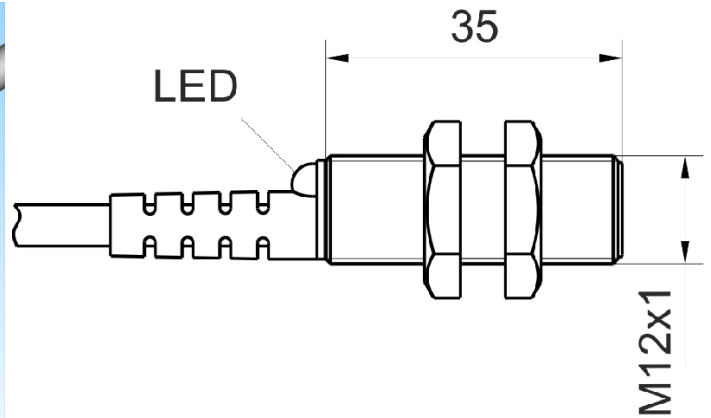


[Article Page](#)

Product Description




inductive sensor DC




Name
Order number
Matchcode
Switching distance
Mounting

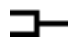
KJ2-M12MB35-DNS
08317822100
9982-2100
2 mm

 shielded

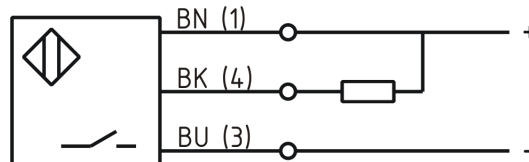
Switch type

 N.O.
DC NPN

Signal Type
Connection

 Cable

Connection diagramm



fine-pitch thread M12 x 35

Dimension (in mm)
Technical Specification
Operating voltage
Max. ripple
Voltage drop
Max. load current
No load current
Leakage current
Switching frequency
Switching hysteresis
Operating temperature
Temperature drift
Repeat accuracy
Switching state
Short-circuit proof
Overload protection
Reverse voltage protection
Protection category
EMC-level
Housing material
Material active face
Utilisation category
Termination

10 - 30 VDC
≤ 10 %
2,4 V
200 mA
≤ 10 mA
< 10 μA
2000 Hz
≤ 15 %
-25 ° C to 70 ° C
≤ 10 %
≤ 5 %
LED
yes
yes
yes
IP67
DIN EN 60947-5-2:2008
Brass, nickel plated
PA 6.6
DC 13
2m PVC 3x0,34mm²



KJ2-M12MB35-DNS

Pulsotronic GmbH & Co. KG Neue Schichtstraße 14b 09366 Niederdorf Deutschland +49 (0)37296 930-200

FIT / MTTF

42,39 / 2693y

Errors and omissions exceptet