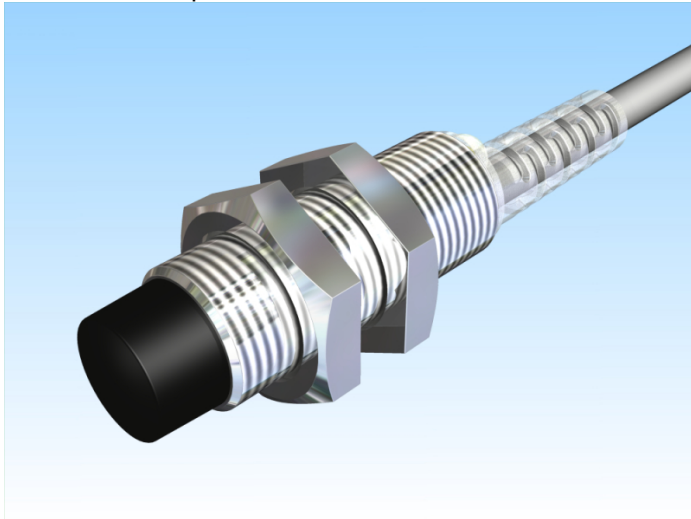
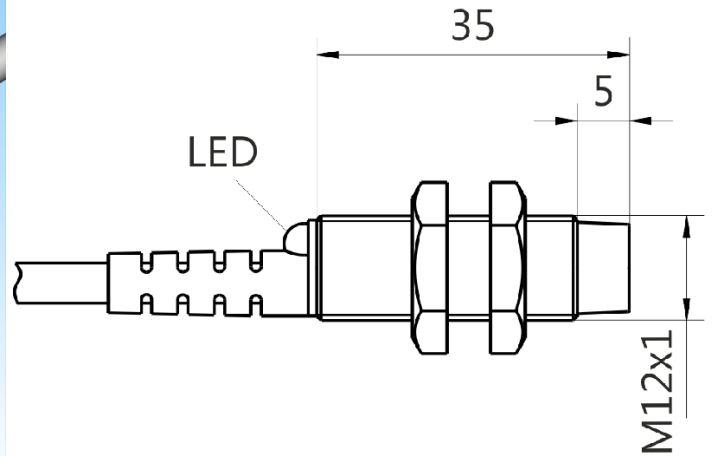


[Article Page](#)

Product Description




inductive sensor DC




Name
Order number
Matchcode
Switching distance
Mounting

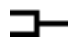
KJ4-M12MN35-DNS
08317822300
9982-2300
4 mm

 non shielded

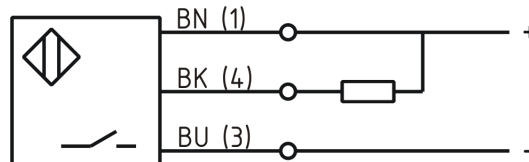
Switch type

 N.O.
DC NPN

Signal Type
Connection

 Cable

Connection diagramm



fine-pitch thread M12 x 35

Dimension (in mm)
Technical Specification
Operating voltage
Max. ripple
Voltage drop
Max. load current
No load current
Leakage current
Switching frequency
Switching hysteresis
Operating temperature
Temperature drift
Repeat accuracy
Switching state
Short-circuit proof
Overload protection
Reverse voltage protection
Protection category
EMC-level
Material active face
Cable length
Cable material
Termination

10 - 30 VDC
≤ 10 %
2,4 V
200 mA
≤ 13 mA
< 10 μA
1000
≤ 15 %
-25 ° C to 70 ° C
≤ 10 %
≤ 10 %
LED
yes
yes
yes
IP67
DIN EN 60947-5-2:2008
PA 6.6
2 m
PVC LIYY
2m PVC 3x0,34mm²



KJ4-M12MN35-DNS

Pulsotronic GmbH & Co. KG Neue Schichtstraße 14b 09366 Niederdorf Deutschland +49 (0)37296 930-200

FIT / MTTF

44,93 / 2541y

Errors and omissions exceptet