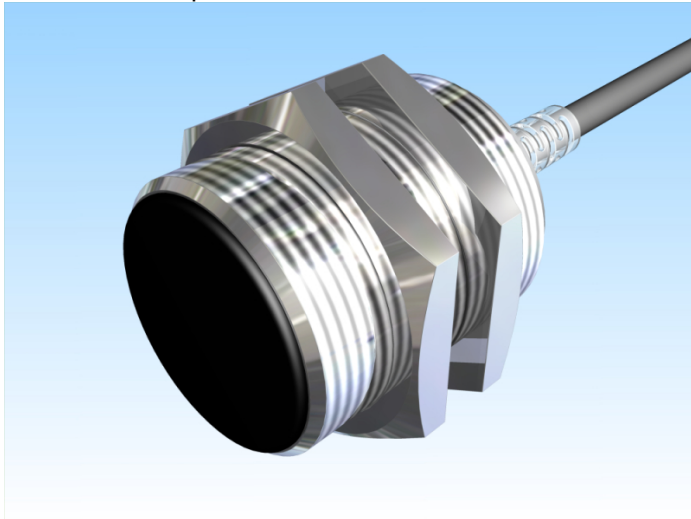
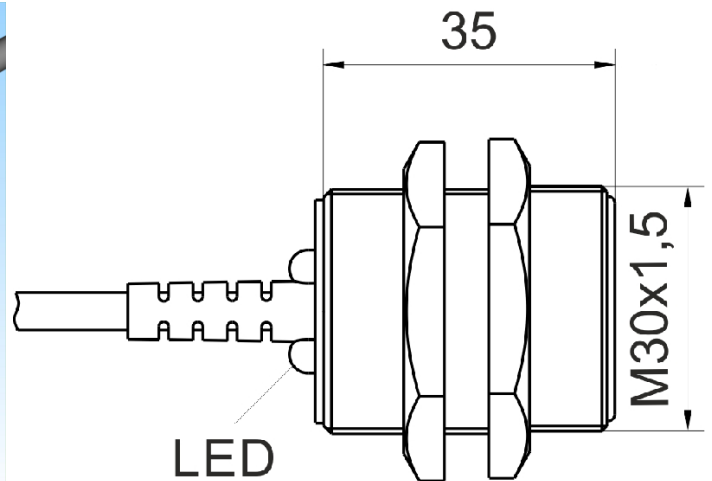


[Article Page](#)

Product Description




inductive sensor DC




Name  
Order number  
Matchcode  
Switching distance  
Mounting


KJ10-M30MB35-DNS  
08317862100  
9986-2100  
10 mm

 shielded

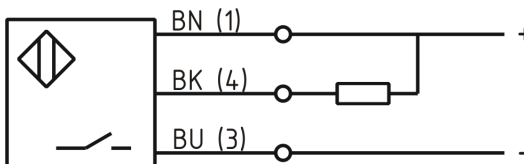
Switch type

 N.O.  
DC NPN

Signal Type  
Connection

 Cable

Connection diagramm



fine-pitch thread M30 x 35

Dimension (in mm)  
Technical Specification  
Operating voltage  
Max. ripple  
Voltage drop  
Max. load current  
No load current  
Leakage current  
Switching frequency  
Switching hysteresis  
Operating temperature  
Temperature drift  
Repeat accuracy  
Switching state  
Short-circuit proof  
Overload protection  
Reverse voltage protection  
Protection category  
EMC-level  
Housing material  
Material active face  
Cable length  
Utilisation category

10 - 30 V DC  
≤ 10 %  
2,4 V  
200 mA  
≤ 10 mA  
≤ 10 µA  
500 Hz  
≤ 15 %  
-25 ° C to 70 ° C  
≤ 10 %  
≤ 10 %  
LED  
yes  
yes  
yes  
IP67  
DIN EN 60947-5-2: 2008  
Brass, nickel plated  
PA 6.6 sw  
2 m  
DC 13



## KJ10-M30MB35-DNS

Pulsotronic GmbH & Co. KG Neue Schichtstraße 14b 09366 Niederdorf Deutschland +49 (0)37296 930-200

Cable material  
Cable cross

PVC grau LIYY  
3x0.34 mm<sup>2</sup>

**Errors and omissions exceptet**